

Local 728



Weekly Digest

JULY 26, 2024 | VOL. 2 | ISSUE 30

In The Spotlight this week!

The Local is doing a software and hardware changeover this weekend starting today at 5:30 pm. The website will be offline until Monday morning.
Thank you for your patience.

**MANY CRAFTS
ONE FIGHT**
#IASOLIDARITY

Updates and Announcements

<https://basic.iatse.net/>

Constitution and By-Laws Important Information

Ballots to vote on the proposed amendments were mailed July 17, 2024 and will be counted August 16, 2024 at Local 728.

The proposed amendments are in the current edition of The Bulletin (Vol. 34; No.4), online using the QR code in the ballot you received, and at the following link on the Local 728 website (**log-in required**):

[Local 728 - 2024 Constitution and Bylaws Resolutions - Ratification Vote Information | IATSE Local 728 \(iatse728.org\)](#)



LOCAL 728 SOLIDARITY FRIDAYS!
WEAR YOUR 728 UNION SWAG ON FRIDAYS AS A SIGN OF SOLIDARITY



The Local 728 Bulletin

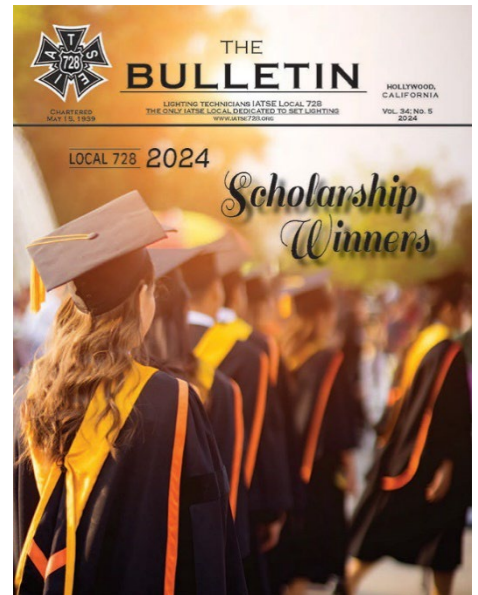
Now available on the website! Special Scholarship issue.

In this issue:

- 26th Annual Scholarship Awards
- Scholarship Program-Dedication to education
- Local specific gains in the 2024 agreement!
- Heartbeat of Hollywood Golf Tournament

Log-in required to view content:

[The Bulletin No. 5 2024 | IATSE Local 728](#)
iatse728.org



Upcoming Events

728 Game Night

Join us for 728 Game Night on 7.28! There will be plenty of good games, but feel free to bring one of your own.

Featuring: Cards Against Humanity-728 Addition!
Jackbox Games-Trivia Murder Party & Quiplash.

Pizza, snacks, and beverages will be provided.

When: Sunday, July 28th

Time: 4PM-8PM

Location: Local728 | 1001 W. Magnolia Blvd. |
Burbank, CA 91506

RSVP: Janette Shugart | jshugart@iatse728.org



Zoom: Medicare 101 Webinar

Join us for a Zoom session with MPTF and MPI representatives. There will be discussion about Medicare enrollment specifically for retiree-health vested and non-vested MPI participants.

When: Tuesday, July 30th

Time: 6PM-7PM

Location: via Zoom

Please RSVP by July 29th

RSVP: <https://mptf.zoom.us/webinar/register>



SOLIDARITY ALERT – TAG RALLY

Please join us August 10th for a rally as we support our Kin at The Animation Guild in their pursuit of a good and fair deal.

TAG enters bargaining with the AMPTP on August 12th.

When: Saturday, August 10th

Time: 5PM

Location: Local80 | 2520 W. Olive Ave |
Burbank, CA 91505



the
animation
guild

IATSE LOCAL 839

Save the Date! Safety Summit

Safety is and remains an issue of the highest importance. Come to this meeting to get an update on the status of stage inspections in town, improving language about inspection guidelines to the fire code that governs our sound stages, and the mental health/crisis response with ESTA and more!

When: Saturday, August 24th

Where: IATSE Local 80 | 2520 W. Olive Ave | Burbank, CA 91505

Further details to follow!



MPTF & IATSE | Day at the Ranch 2024

Join us for MPTF-IATSE's Day at the Ranch at Calamigos in Malibu, CA for a day of fun.

All tickets include admission, parking, lunch, and the opportunity to participate in the auction and raffle, games, and more!

When: Sunday, November 10th

Time: 11AM-3PM

Location: Calamigos Ranch | 327 Latigo Canyon Rd | Malibu, CA 90265

To Purchase

Tickets: <https://e.givesmart.com/events/CTX/>



Union Resources

MPI-Mental Health and Wellness Resources

MPI has a variety of free and low-cost mental health and wellness resources. The list is available on the L728 website in the assistance section.

Log-in required to view content:

[Assistance | IATSE Local 728 \(iatse728.org\)](#)

If you have question about any of the resources, please contact Brenda Weiner, Wellness Program Manager at: bweiner@mpiphp.org

Mental Health Tools and Resources

Many of us are dealing with a lack of work for as long as a year in what may be a new normal. If you are in need of mental health assistance, don't feel ashamed. It's natural. Please utilize some of these tools from our website or call us at the hall.

MPTF Intake Line: (323) 634-3888

[Mental Health Resources \(iatse728.org\)](#)

[Mental Health Tools and Resources with Behind The Scenes | IATSE Local 728 \(iatse728.org\)](#)

Local 728 Guide to Assistance and Benefits

Information for Local 728 members, including:

- Unemployment Insurance
- Disability Insurance
- Sick Dues
- Life Insurance
- Honorable Withdrawal
- MPI (Motion Picture Pension & Health Plans
- Motion Picture & Television Fund
- Assistance Information

Log-in required to view content:

[Assistance](#) | [IATSE Local 728 \(iatse728.org\)](#)

Local 728 guide to Assistance and Benefits

Information for Local 728 Members including:

Unemployment Insurance
Disability Insurance
Sick Dues
Life Insurance
Honorable Withdrawal
Motion Picture Industry Pension & Health Plans
Motion Picture and Television Fund
Assistance Information

I.A.T.S.E. Local 728
1001 W. Magnolia Boulevard
Burbank, California 91506
818-954-0728/fax 818-954-0732
Website: www.iatse728.org
Email: local728@iatse728.org

Martin Weeks, President
Malakhi Simmons, Vice President
Greg Reeves, Business Representative-Secretary
Pascal M. Guillemard, Treasurer-Call Steward



1

In Memoriam

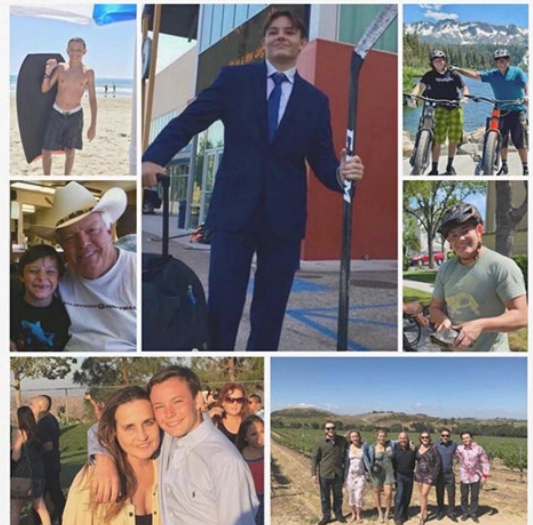
Celebration of Life- Brian J. White

A Celebration of Life will be held on Saturday, August 3rd at 3PM.

Location: 28807 Bouquet Canyon Rd | Santa Clarita, CA 91390

[Notice of passing: Brother Brian J. White on July 3rd 2024 | IATSE Local 728 \(iatse728.org\)](#)

Celebrating THE WONDERFUL LIFE OF



BRIAN JEFFREY WHITE

MAY 10, 2002 - JULY 3, 2024

Saturday, August 3rd at three o'clock
28807 Bouquet Canyon Rd Santa Clarita, CA
91390

Brother Don Lewis

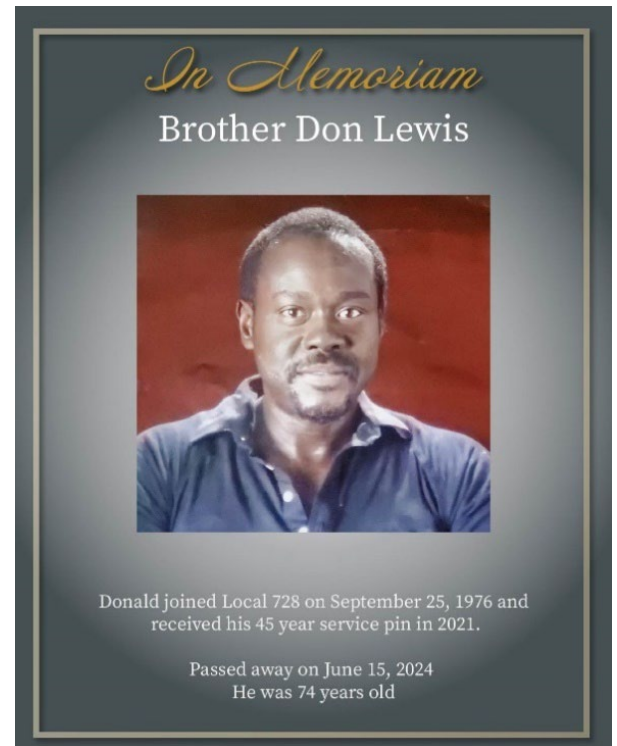
A 48-year member of Local 728, Brother Lewis passed away on June 15th.

All members are invited to the services to celebrate Don's life.

Services will be held on Saturday, August 3, 2024 at 10AM at Angelus Funeral Home, 3875 S. Crenshaw Ave, Los Angeles, CA.

Details can be found at the following link:

[Notice of member passing: Don Lewis on 6-15-24 | IATSE Local 728 \(iatse728.org\)](#)



IATSE PAC

IATSE PAC

The IATSE PAC is about access to politicians regardless of platform on behalf of ALL members.

While the work stoppage last year impacted you and your colleague's financial wellbeing, the fights we take on with PAC resources continue for our industry, benefiting ALL U.S. members and Local Unions whether they contribute or not. Donate today!

[PAC Action Center \(vocusgr.com\)](https://vocusgr.com)

[IATSE PAC: Join the Fight! \(youtube.com\)](https://youtube.com)

[The Impact of Elections on Labor Law, Unions, and Their Members 2024 Edition | GoToStage.com](#)

