

EARLY EDITION

# Local 728



*Weekly Digest*

SEPTEMBER 18, 2024 | VOL. 2 | ISSUE 38

*In The Spotlight this week!*



**MPI - Hardship Withdrawal Form now available!**  
See website for details [www.mpiphp.org](http://www.mpiphp.org)



## **Understanding the Contract-Rides and Rooms Edition**

When working in excess of 14 hours, the producers **MUST NOW** offer rides or rooms rather than you requesting them. The rooms must be available for the applicable daily rest period, and they must transport you to and from the location to get to the hotel. Secured parking for your vehicle shall also be provided. See the MOA on the website for further details. Now more than ever, take the room!

IATSE Local 728 TTR bags are available in the hall, no charge, for all active members.



In Unity,

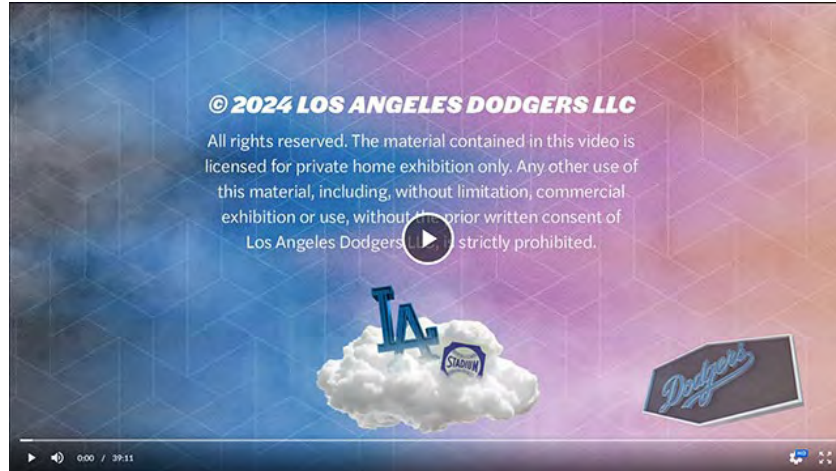
A handwritten signature in black ink that reads 'Greg Reeves'.

Greg Reeves  
Business Representative-Secretary  
Lighting Technicians IATSE Local 728

## IATSE Local 728 Represents at Union Night

Thanks to all the members for coming out for a HOT night at the Ballpark. Please find the attached pregame video featuring VP Malakhi Simmons at minute 19 representing IATSE Local 728 on the field. Go Dodgers!

[LA Dodgers Pre-Game Video](#)



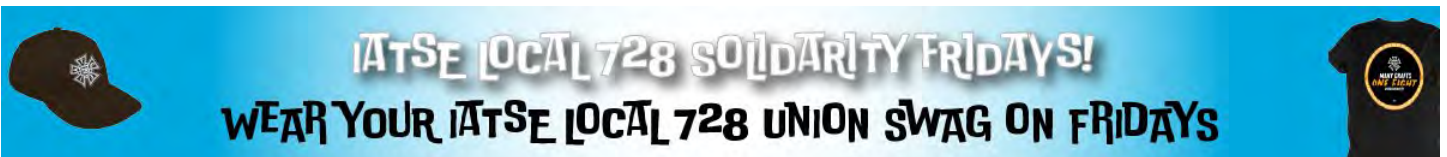
## Creative Arts Emmy- In Memoriam

The 76<sup>th</sup> Creative Arts Emmy Awards took place on Sunday, September 8, 2024. The Academy took a moment to celebrate our brothers, sisters, and kin in the industry who are no longer with us.

ICYMI: Here are links to the In Memoriam from the Creative Arts Emmy telecast as well as an Obit featuring our brother, Spike.

[JC "Spike" Osorio - Emmy Awards, Nominations and Wins | Television Academy \(emmys.com\)](#)

[2024 Creative Arts: In Memoriam \(Sunday\) | Television Academy \(emmys.com\)](#)





## Webinar: What is LCLAA (Labor Council for Latin American Advancement)

As we celebrate Hispanic Heritage Month (September 15-October 15), join us for a webinar to meet the leaders of LCLAA and hear about their important work and activism.

**When:** Wednesday, September 18

**Time:** 12:30PM PT

**Register:** [Registration \(gotowebinar.com\)](https://gotowebinar.com)



### WEDNESDAY, SEPTEMBER 18TH WHAT IS LCLAA AND WHY IS IT IMPORTANT TO IATSE WORKERS?

With Bridget Nakamura, Chapter Development and Field Coordinator for Labor Council for Latin American Advancement (LCLAA) and Katherine Fernandez, Policy and Communication Associate at Labor Council for Latin American Advancement (LCLAA)

Join us to celebrate Hispanic Heritage Month 2024 (September 15 – October 15). Meet leaders from the Labor Council for Latin American Advancement (LCLAA) and hear the updates of their critical work and advocacy. LCLAA advocates, educates and organizes to elevate power for working people. Get the latest news and resources, especially in this election year. Most important, learn how IATSE workers connect, benefit from, and strengthen a voice for fairness and advancement for all workers.

Wednesday,  
September 18th  
3:30pm - 4:45pm ET

2:30pm – 3:45pm CT

1:30pm – 2:45pm MT

12:30pm – 1:45 pm PT

Register Here:  
[https://iatse.com/  
WhatIsLCLAA](https://iatse.com/WhatIsLCLAA)

# Upcoming Events

## Barks & Brews

Join us at the membership hall for a beer, (or wine or hard seltzer) bring your dog, and let's hang out!

Treats available for good boys and girls. Round table pizza will also be served. Members without 4 legged friends also encouraged to attend.

**When:** Saturday, September 28th

**Time:** 4PM-8PM

**Location:** IATSE Local 728 | 1001 W. Magnolia Blvd | Burbank, CA 91506

**RSVP:** Janette Shugart [jshugart@iatse728.org](mailto:jshugart@iatse728.org)



## IA Solidarity Event: 705 Clean Up & Beautification Day!

IATSE Local 705 is moving and needs some help getting the building ready! Details below.

**When:** Saturday, September 28th

**Time:** 10AM – 5PM (Potluck 1PM-2PM)

**Location:** Local 705's New Digs | 5127 Laurel Canyon | Valley Village, CA 91607

**Sign-Up:** [Local 705 Clean Up and Beautification Day \(google.com\)](https://www.google.com)



IA SOLIDARITY EVENT:  
**705 CLEAN UP & BEAUTIFICATION DAY!**

LOCAL 705 is moving and needs some help  
to get the new building looking sharp!

● ● ● ● ● ● ● ●

**SATURDAY, SEPTEMBER 28**

**10AM-5PM**  
POTLUCK 1PM-2PM



LOCAL 705's NEW DIGS:  
5127 Laurel Canyon Blvd  
Valley Village, CA 91607



RSVP for updates  
and to let us know what  
you can do and what you  
can bring!



[bit.ly/705DAY928](https://bit.ly/705DAY928)

## 34<sup>th</sup> Annual Great LA River Cleanup – October 5<sup>th</sup>

The IATSE Local 728 ECO Committee is again participating with the Friends of Los Angeles River Cleanup as they beautify our community. They host it several times annually. The ECO Committee is putting out feelers to see if members are interested in participating in the October 5 cleanup. If you'd like to participate, please respond to this e blast. Deadline for RSVP is October 1.

**When:** Saturday, October 5<sup>th</sup>

**Location:** North Atwater Park | 3900 Chevy Chase Drive | Los Angeles, CA 90039

Note: We will be meeting up at the North Atwater Park location but we encourage people to go to wherever is most convenient/important to them. Remember to send us a selfie if you don't meet at North Atwater Park.



## IATSE Interlocal Yard Sale

The IATSE Hollywood Young Workers/Green Committees are doing another Interlocal Yard Sale and Recycling Drive on 10/27. The event will be hosted at EcoSet (3019 Andrita St, Los Angeles, CA 90065). If you would like to Sell and/or Volunteer, follow the link!

**When:** Sunday, October 27th

**Location:** EcoSet | 3019 Andrita St. | Los Angeles, CA 90065

[2024 InterLocal Solidarity Yard Sale Member Space Reservation + Volunteer Form](#)

# Union Resources

## Entertainment Health Insurance Solutions (EHISCA)

As was reported at the last General Membership Meeting, MPI is eliminating Premium-Free COBRA for members to help keep the Plans in their current healthy status. This was done in light of projected work hours being lower than normal for the foreseeable future. If you are in danger of losing your MPI insurance, reach out to MPTF for their assistance in finding Health Insurance through the California Marketplace at <https://ehisca.com>

If you need to request a health insurance consultation, follow these step-by-step instructions:

- **Visit the Portal Website:** <https://ehisca.com/>
- **Scroll down to:** [short online form](#)
- **Register:**
- **Enter Personal Information:**
  - Fill out the registration form with your personal details: first name, last name, and email address. Note that your email address will be your username. You will also need to create your password and confirm the password. You only need to do this once.
  - **Email Verification:** Check your email for a verification link and click on it to verify your email address.
- **Complete Your Profile:**
  - If you would like a service like an individual consultation with a Health Benefits Specialist, you must complete your profile. After logging into the client portal, if you have not yet completed it, you will be prompted to complete your profile. You must complete your profile form in order to request any service in the portal.
- **Navigate to Counseling & Consultations:**
  - Find the “How We Help” section at the top. Click on it, then click on “**Counseling & Consultations**”, and then click on “**Health Insurance Counseling**”. Complete the form and a team member will reach out to you in 2-3 business days.



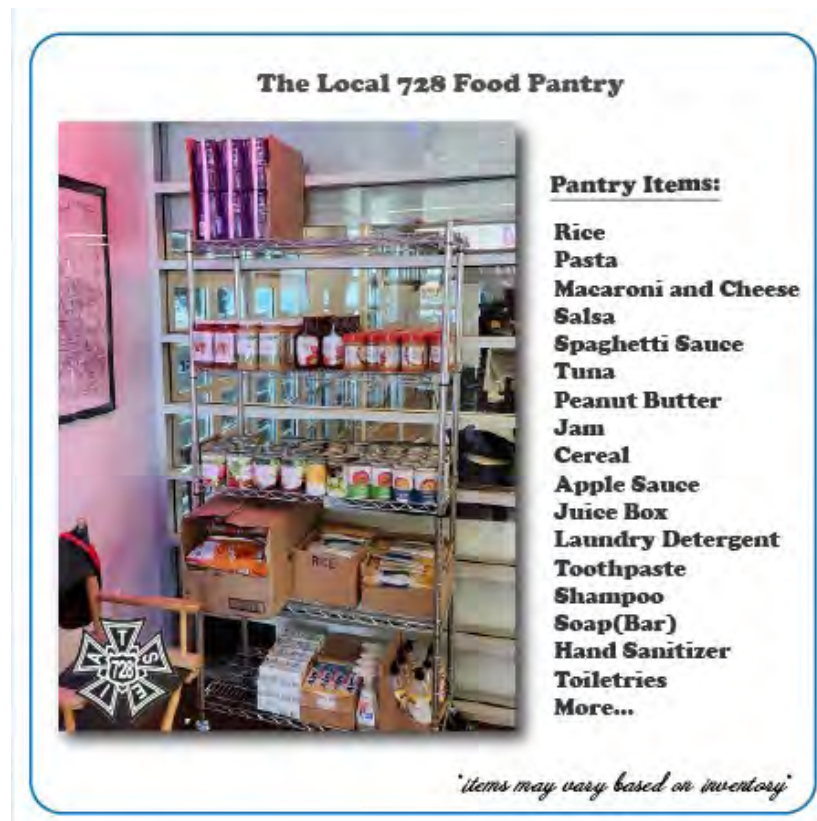
**Entertainment Health Insurance Solutions**

## **IATSE Local 728 Food Pantry**

Many of your colleagues are still hurting from the slowdown in work. The IATSE Local 728 Food Pantry is open and available to members.

Check the link below for upcoming Food Distributions through Labor Community Services:

[Events — Labor Community Services \(lcs-la.org\)](http://lcs-la.org)



## **Mental Health Tools and Resources**

If you are in need of mental health assistance, don't feel ashamed. It's natural. Please utilize some of these tools from our website or call us at the hall.

MPTF Intake Line: (323) 634-3888

[Mental Health Resources \(iatse728.org\)](http://iatse728.org)

[Mental Health Tools and Resources with Behind The Scenes | IATSE Local 728 \(iatse728.org\)](http://iatse728.org)



## Verdugo Jobs Center

Looking for a side hustle? Check out the Verdugo Jobs Center or contact Tina Hartyon (818) 937-8080.

<https://verdugoworks.com/>



**VERDUGO JOBS CENTER**

**GET STARTED** | **VISIT** [verdugoworks.com](https://verdugoworks.com) | **CALL** 818.937.8000

**COME FOR A JOB  
LEAVE WITH A CAREER**

**REACH YOUR GOALS  
WITH NO-COST EMPLOYMENT SERVICES  
AND TRAINING OPPORTUNITIES**

**EMPLOYMENT SERVICES**  
Career help from people who care:

- Self-guided or assisted job searches
- Career exploration
- Access to job fairs and hiring events
- Help with résumés and job interviews
- Access to computers, Internet, printers and more

**TRAINING OPPORTUNITIES**  
Strengthen your skills:

- Paid on-the-job training
- Classroom training to build skills
- Certification courses and apprenticeships
- Counseling and support

*Learn more at [verdugoworks.com](https://verdugoworks.com).*

**GET STARTED ON YOUR CAREER TODAY! CALL 818.937.8000**

Verdugo Jobs Center / 1255 South Central Avenue, Glendale, CA 91204

The Workforce Innovation and Opportunity Act is an Equal Opportunity Program. Auxiliary aids and services are available upon request to individuals with disabilities. TTY (818) 548-3857

**VERDUGO JOBS CENTER**  
Burbank | Glendale | La Cañada Flintridge

America's Job Center  
of Excellence™

## IATSE Local 728 Guide to Assistance and Benefits

Information for IATSE Local 728 members, including:

- Unemployment/Disability Insurance
- Sick Dues
- Life Insurance
- Honorable Withdrawal
- MPI (Motion Picture Pension & Health Plans)
- Motion Picture & Television Fund
- Assistance Information

**Log-in required to view content:** [Assistance](#) | [IATSE Local 728](#) ([iatse728.org](https://iatse728.org))

# *Election News*

## **Take the Pledge-Measure A**

As reported at the last Membership meeting, the LA Fed is putting its support behind Measure A. Take the pledge today.

[Yes on Measure A Pledge \(thelafed.org\)](https://thelafed.org)



# *IATSE PAC*

## **IATSE Spotlights Two 2024 Election Resources**

“On July 22, 2024 the IATSE General Executive Board voted unanimously to extend its endorsements to Vice President Kamala Harris for President of the United States...”

[IATSE for Harris-Walz - Read More](#)

Click on the link below for a list of resources needed to cast your ballot!

[IATSE Voter Toolkit](#)



## **IATSE PAC**

The IATSE PAC is about access to politicians regardless of platform on behalf of ALL members.

While the work stoppage last year impacted you and your colleague's financial wellbeing, the fights we take on with PAC resources continue for our industry, benefiting ALL U.S. members and Local Unions whether they contribute or not. Donate today!

[What is the IATSE PAC? Play Video](#)



## Save the Date-IATSE All in Mixer

It is that time of the year again, the annual Hollywood IATSE ALL in Mixer and PAC Fundraiser event. The location is back at IATSE Local 80 for Saturday, October 12th from 6PM -11PM.

Every member can come and enjoy free food, drinks, play games, and win multiple door prizes that cost nothing. See you there!

A promotional poster for the IATSE Solidarity Event. The background is a dark blue night sky with a starry pattern and a large, glowing yellow and white IATSE logo in the center. The logo is a Maltese cross with 'I', 'A', 'T', 'S', 'E' on the arms and 'IA' in the center. The text is white and yellow. At the bottom, there is a silhouette of a city skyline.

**IATSE SOLIDARITY EVENT**  
*Member and Member's Guest Only (No Children)*

**OCTOBER 12, 2024**  
**@ 6PM - 12AM**

**IATSE LOCAL 80**  
2520 W Olive Ave, Burbank, CA 91505

*Music, Food, Cash Bar, Games, Raffle,  
and Pac Fundraiser*

**HOLLYWOOD**  
**IATSE "ALL-IN" MIXER**